

Hitch Catalog

Pony Express

1060 Tugger



Revision 1.3 April 1, 2014

Hitch Catalog

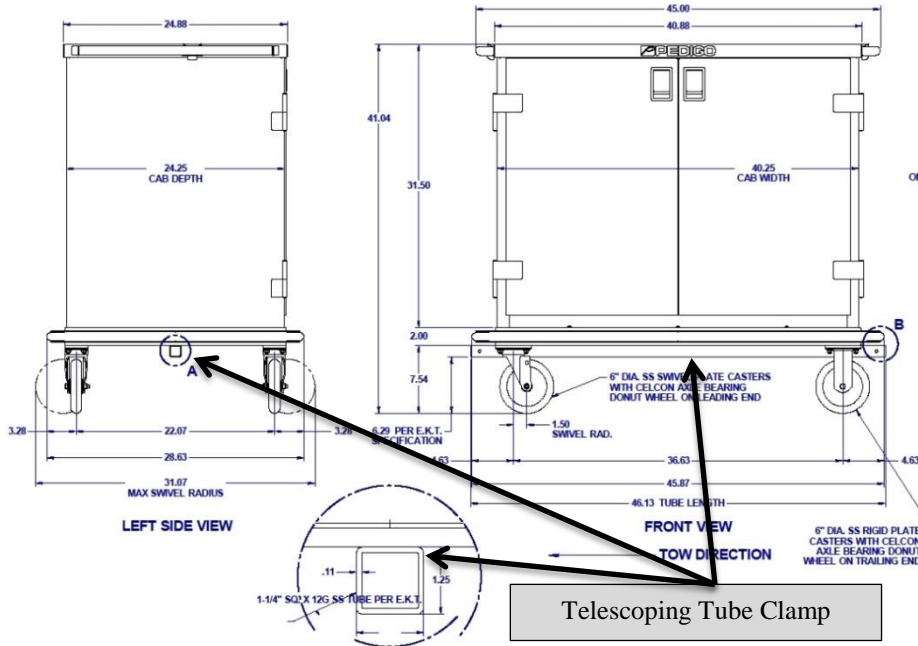
RETAIL
ERGONOMIC SOLUTIONS

MATERIAL HANDLING
ERGONOMIC SOLUTIONS

HEALTHCARE
ERGONOMIC SOLUTIONS

Pony Express 1060 Hitch Catalog

Pony Express 1060 Hitch Accessories

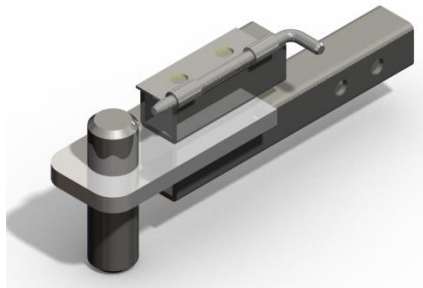


Telescoping Tube Clamps
Mounts under a cart providing the front and rear receiving tube for the hitches.

1060-B01
For carts 26" to 41" long

1060-B02
For carts 40" to 55" long

1060-B03
For carts 56" to 76" long



1060-C01

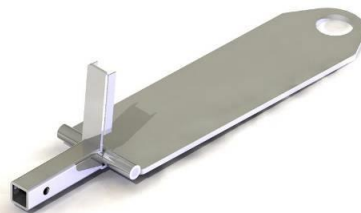


1060-C02

Male Hitches
Connects to either end of the telescoping tube clamp (1060-B0X).

1060-C01
For use with 5" or 6" casters

1060-C02
For use with 6" or 8" casters



Female Hitch
1060-A01
Used when pulling more than one cart. Installs into any telescoping tube clamp and connect to any male hitch. Used only between carts.